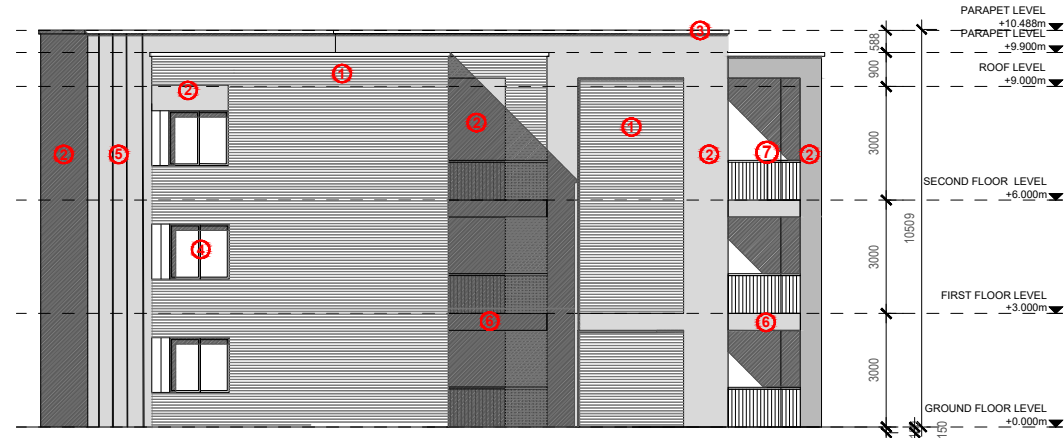


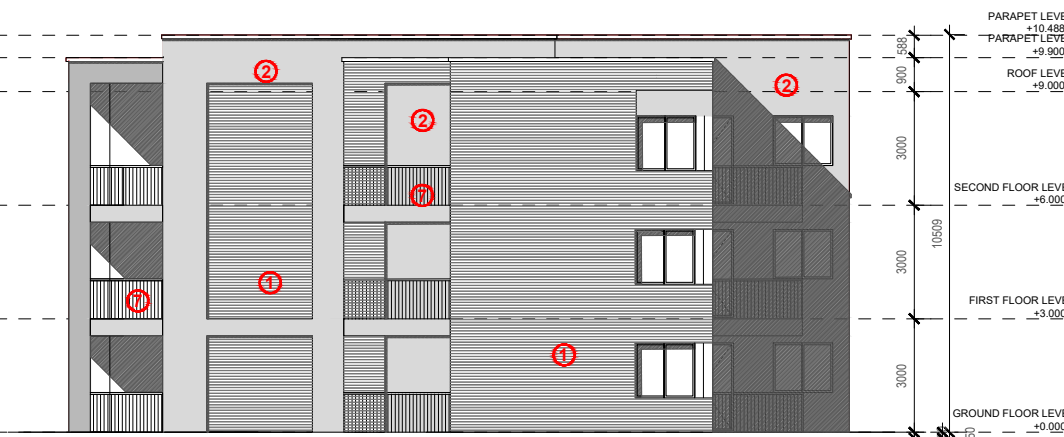
1 Front Elevation
1:200



2 Side Elevation
1:200



3 Back Elevation
1:200



4 Side Elevation
1:200

Note: Refer to site plan for orientation and floor levels

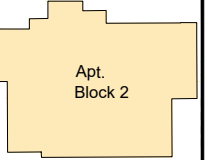
External Finishes Legend

- ① Selected Brick Module
- ② Selected Render
- ③ Precast Coping/Cills
- ④ Metal Window Frame
- ⑤ Metal Cladding
- ⑥ Metal Facia/Soffit to Balcony
- ⑦ Metal Handrail to Balcony

Notes:
Do not scale from this drawing. Use figured dimensions in all cases. Verify dimensions on site and report any discrepancies to the architects immediately. This drawing to be read in conjunction with the Architects Specification, Fire Certificate, DAC, other consultants issued drawings and reports. Contractor is responsible for:
1. All dimensions, quantities and performance requirements to be confirmed on site
2. All information that pertains solely to the fabrication processes or to the techniques of construction
3. All coordination of the work of all trades
4. Assuring consistency with the contract documents
© This drawing is copyright and may only be reproduced with the architect's permission.

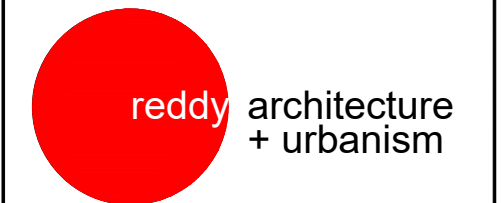
Drawing Notes:

Apartments Block 2
3 Storey
1x1B/2P
6x2B/3P; 5x2B/4P
GIA:(Refer to the schedule below)



| Apartment F5 | Area SQM | Apartment F6 | Area SQM |
|----------------|-----------|----------------|-----------|
| Hall | 3.26 SQM | Hall | 8.55 SQM |
| Bathroom | 4.05 SQM | Bathroom | 4.18 SQM |
| Storage 1 | 1.00 SQM | Storage 1 | 3.00 SQM |
| Storage 2 | 2.00 SQM | Storage 2 | 2.31 SQM |
| Living-Dining | 24.47 SQM | Living-Dining | 28.24 SQM |
| Main Bedroom | 11.82 SQM | Main Bedroom | 13.33 SQM |
| | | Single Bedroom | 8.70 SQM |
| Apartment F7 | Area SQM | Apartment F8 | Area SQM |
| Hall | 8.32 SQM | Hall | 8.23 SQM |
| Bathroom | 4.23 SQM | Bathroom | 4.00 SQM |
| Storage 1 | 3.04 SQM | Storage 1 | 3.10 SQM |
| Storage 2 | 3.10 SQM | Storage 2 | 1.23 SQM |
| Living-Dining | 30.32 SQM | Storage 3 | 0.95 SQM |
| Main Bedroom | 13.00 SQM | Living-Dining | 28.12 SQM |
| Double Bedroom | 11.43 SQM | Main Bedroom | 13.03 SQM |
| | | Single Bedroom | 7.15 SQM |

| REV | DATE | DRN | DESCRIPTION |
|-------|----------|-----|------------------------|
| P02 | 31/01/20 | LB | Issued for Information |
| P01.1 | 19/12/19 | LB | Issued for Information |
| P01 | 19.12.13 | LB | Preliminary Issue |



Reddy Architecture + Urbanism
41 Dean Street,
Kilkenny
R95 P291

T: +353 (0)56 7762697
W: www.reddyarchitecture.com
E: info@reddyarchitecture.com

Client Details:
AXIS Construction

Project Details:
Proposed Residential Development
at Clonattin, Gorey

Drawing Title:
Apartment Block 2
Sheet 2 of 2

| | | |
|---|---------------------|--------------------|
| Job No: P19-147K | Date: 20/11/2019 | Scale@A3: 1:200 |
| Status: 0.3 Design Development | Drawn By: LB | |
| Purpose: Planning | Checked By: MK | |
| Drawing Number P19-147K-RAU-XX-XX-DR-A-31112 | Revision P02 | |